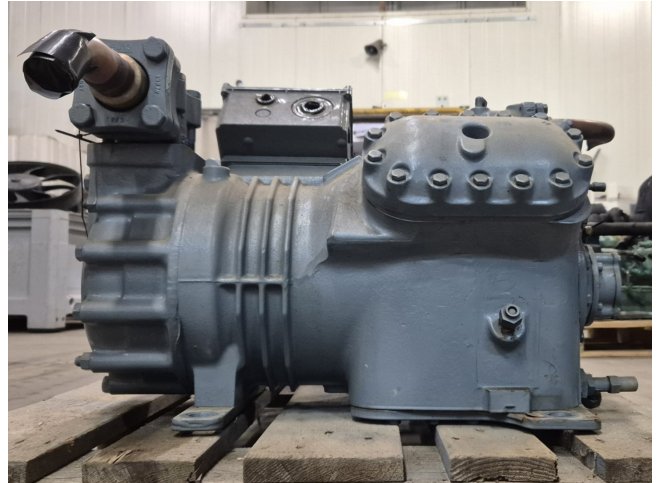


DWM D8RH1-2500-AWM/D

Specifications

| | |
|-------------------|-------------------------------|
| Marca | DWM |
| Tipo | D8RH1-2500-AWM/D |
| Refrigerante | Freon |
| kW at 0°C/+40°C | 73,9* |
| kW at -5°C/+40°C | 62,0 |
| kW at -10°C/+40°C | 51,6 |
| kW at -20°C/+40°C | 42,4 |
| kW at -30°C/+40°C | 27,6 |
| Mirilla | ✓ |
| m3 / h | 71 m ³ /h |
| Comentarios | *Capacity based on +5°C/+40°C |
| Tamaños | 700x560x500 mm (LxWxH) |
| Stock | 1 |



Description

Used DWM D8RH1-2500-AWM/D

Used DWM D4RH1-2500-AWM/D semi-hermetic reciprocating compressor on Freon with a sight glass. The compressor has a displacement of 71 m³/h.

*Why choose for HOSBV? We are not only the largest used refrigeration specialist in Europe, but also, we deliver all equipment including an extensive test, warranty and an industrial cleaning. *Optionally we can also perform a new paint job and arrange the logistics.

